

## Continuous Hinges – EM Series (Edge Mount)

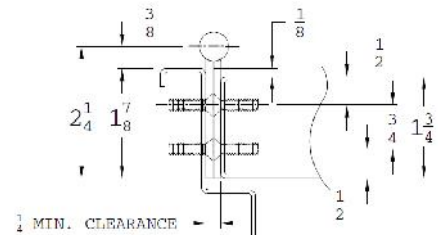
The backbone of the door opening is the hinging system. Syntégra continuous hinges come preinstalled on the door, and are precision-engineered to withstand the severities of the toughest environments while retaining their beauty throughout the life of the building. Syntégra hinges evenly distribute the forces along the full length of the door which reduces stress on the frame, closer, and the locking system.

Syntégra hinges come standard with proprietary ‘clean’ bearings that minimize static electricity which can attract dust and debris. These bearings significantly prolong the life of the hinge by eliminating metal-to-metal contact often found in lesser products.



### Features

- Heavy-Duty 14 Gauge 304 Stainless Steel
- No exposed Fasteners when door is closed
- ‘Clean’ bearings standard
- Self-drilling screws supplied
- Welded End Pins standard
- Supports door weights up to 600 lbs.
- US32D Satin Finish



### Options

#### Standard

Hospital Tip  
Security Fasteners (Torx-Pin)  
Wide-Throw (See WT Series)  
Swing-Clear (See SC Series)

#### Electrical

CT – Concealed Thru-Wire  
2 – Wire (18ga.)  
4 – Wire (28ga.)  
8 – Wire (28ga.)  
EPT – Power Transfer Prep

### Certifications

- Exceeds ANSI/BHMA A156.26 Grade 1 requirements
- Meets UL10C – U.L. and U.L.C. listed
- Meets ANSI/BHMA A117.1 and ADA for barrier-free access