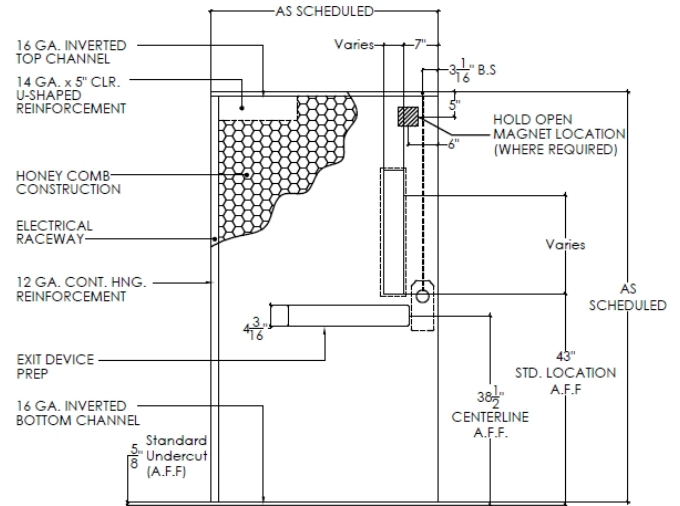


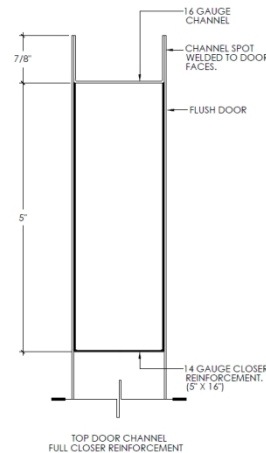
Door Construction Specifications - Honeycomb Core

Honeycomb cores offer exceptional performance for general purpose applications. The face sheets are fully supported by the honeycomb to assure rigidity, structural integrity, and resistance to impact damage.

- Material: A60 Galvanneal
 - Optional A90 per ASTM A653
- Gauges available: 18 GA (Std.), 16 GA
- Door thickness: 1-3/4" Std.
- Rust inhibitive prime coat per ANSI/SDI 250.10
- 1" Honeycomb hex cells permanently bonded to both face sheets
 - Impact and crush resistant to 45 PSI
 - Resin impregnated honeycomb optional
- WHI label included



- Top and Bottom Channels: 18 GA welded to face sheets
 - Flush top cap optional
- Hardware Reinforcements
 - Hinges : 3/16"
 - Closers: 14 GA
 - Mag holders: 14 GA



SURFACE DOOR CLOSER NOTES:
FULL SURFACE CLOSER REINFORCEMENT IS APPLICABLE FOR BOTH PUSH OR PULL MOUNTED APPLICATIONS.

DRILL & TAP FOR DOOR CLOSER FASTNERS.
DO NOT USE THRU-BOLTS

- Elevation options

